



NORTHERN BRANCH of
THE ROYAL
SOCIETY OF
TASMANIA

THE ADVANCEMENT
OF KNOWLEDGE

The Royal Society of Tasmania

NORTHERN BRANCH

PUBLIC LECTURE BY

Dr Kuluni Millaniyage What Makes a Good Timber Floor?

when: **1.30 pm Sunday 24th November 2024**

where: **Meeting Room, QVMAG at Inveresk**

admission: **free for members of the Royal Society of Tasmania**

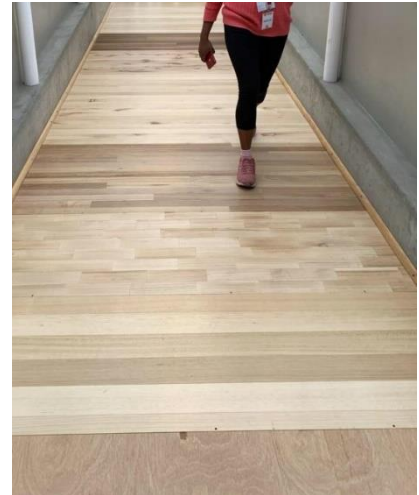
\$6 general admission

**\$4 for students, QVMAG or TMAG Friends, and
members of Launceston Historical Society**



This presentation will report on research which explored the use of Tasmanian plantation-grown *Eucalyptus nitens* timber in engineered flooring. Prototypes were developed and compared to existing products for domestic/light commercial applications.

The presentation will discuss what characteristics make for an acceptable floor and how this then relates to the introduction of a new timber resource that may be lower in density than current products, customs and standards currently recommended.



Dr Kuluni Millaniyage has a diverse background in wood science and forestry research-led practice in both academia and industry.

Dr Millaniyage is an experienced researcher and innovative timber products specialist with a history of developing novel engineered timber products from plantation timber. She has a background in forestry, wood and environmental science, analysis of standards and policies, social aspects and perceptions of timber use and product development.

Generously supported by



2024 Launceston Lecture Series