



THE ROYAL
SOCIETY OF
TASMANIA

THE ADVANCEMENT
OF KNOWLEDGE

The Royal Society of Tasmania



A Double Devil Dilemma

A PUBLIC LECTURE BY

Emeritus Professor Greg Woods

when: **1.30 pm Sunday, 28 November 2021**

where: **Meeting Room, QVMAG at Inveresk**

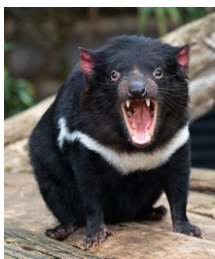
admission: **free for members of the Royal Society of Tasmania**

\$6 general admission

\$4 for students, QVMAG or TMAG Friends, and
members of Launceston Historical Society

BOOK for QVMAG lecture - 0417 330 118 or apcachris@gmail.com

for Zoom webinar, register at rst.org.au/



Transmissible cancers are rare. However, Tasmanian devils are dying from two transmissible cancers that comprise Devil Facial Tumour Disease (DFTD). Both cancers arose from Schwann cells that avoided immune elimination. Research is revealing why devils appear to be susceptible to these transmissible cancers. Promising vaccine research and field observations that some devils can recover from DFTD provide hope for the devil population's future.

Greg Woods' (PhD, FFSc [RCPA]) lifelong interest in immunology has led to studies of T cells, leukaemia, UV irradiation, tumour immunology, dendritic cells and Devil Facial Tumour Disease in laboratories in Toronto, London and Scotland. Awards include a "Eureka Award for Environmental Science" and the "ASMR Research award in Recognition of Distinguished Service to Medicine, Science and Community".

Generously supported by



City of LAUNCESTON

QUEEN VICTORIA
MUSEUM & ART GALLERY

2021 Launceston Lecture Series